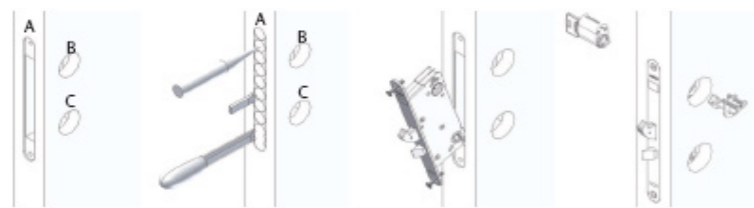


Installation Instruction

Connect 310, 311, 410, 411, 2002 50 mm, backset striking plate 1264 and 1487

Mortice instruction



1. Mark centreline A (Face plate) when you have decided the position of the lockcase.
2. Put template along line E and place on leading edge on the door, mark cylinder and handle hole B + C according to the backset of lock you are fitting).
3. Mark hole for forend where centerline A crosses template line F.
4. Use a 20 mm drill bit to get the correct depth for the lockcase. 75 mm for 50 mm backset. IF fitting an electromechanical lock or microswitched lock add 10 mm to the dept. Do not use force to push the lockcase into the mortice.
5. Drill the 42 mm hole for cylinder and handle through the door.
6. If you are installing the 2002 special sash lock. Mark and drill hole D. Do not drill through the door, only to the centre of the door from the inside.
7. Mortice the faceplate into the edge of the door, this has a depth of 3 mm and radius 11.
8. Put the template for the strike plate acc. drawing. Make sure measure S is 2-4 mm. Make the mortise according to strike plate drawing beside. Use a chisel to fit the strike plate into the mortise. Use a chisel to make the outer profile according to drawing. **Important!** Assa recommends a clearance of 3 mm between forend of lock case and strike plate.

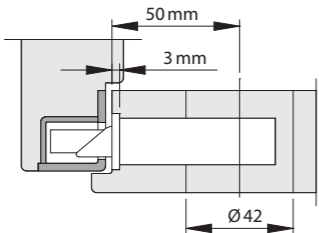
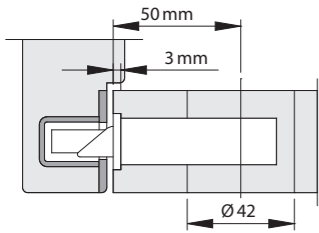
Handing of latches and anti thrust bolt.

1. Loosen screws and remove the forend.
2. Turn latch 180°.
3. Replace forend.
4. Tighten the screws.

Placement of lock case in door blade

Un rebated – Use plane strike plate

Rebated door – Use an angled strike plate



The Lockshield for Connect 2002 is reversible and must be mounted on the side of the lock case, facing the outside of the door. The lockshield is reversed by removing the screw at the back and turn the lockshield and replace the screw.

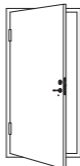
When installing the cylinder, beware of the new arrow design on the cylinder follower. The arrow should be pointing down on both cylinder followers when assembling the cylinders. (not concern 3xx)



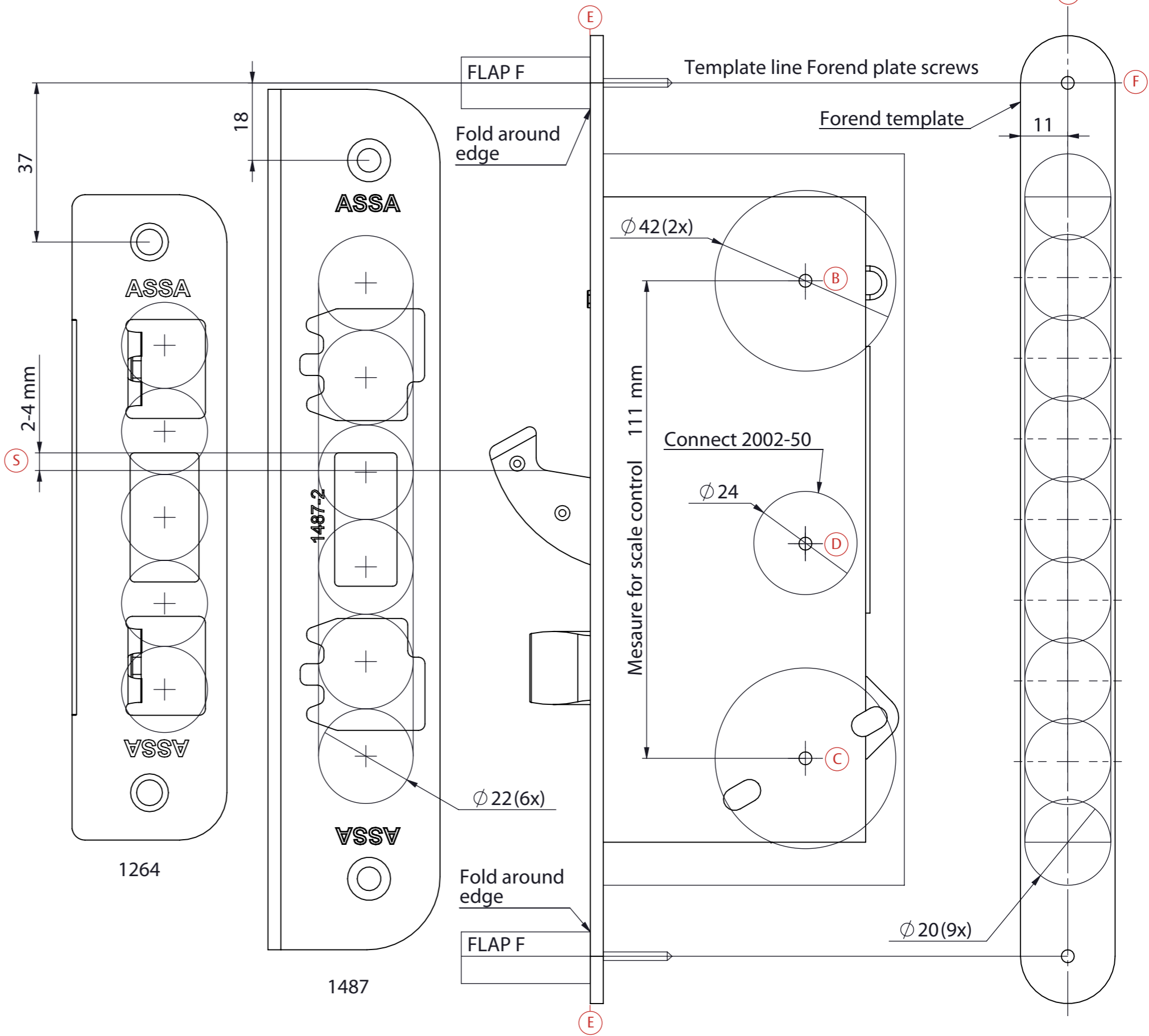
For adjusting striking plate 1487 use a screwdriver, width 5 mm. Bend or revolve carefully a small step at the time until you reach a proper result.



Hinges to the right
= Right handed



Hinges to the left
= Left handed



Scale 1:1. Do not copy! Size may change. ASSA will not be responsible for a copied installation instruction.

ASSA ABLOY

NOTE! Do not open the lock. Broken seal would invalidate the warranty of the product.

Maintenance secures the functionality. For detailed information look at www.assa.se